

Technical Note TN.JS-019

17 February 2015

TITLE

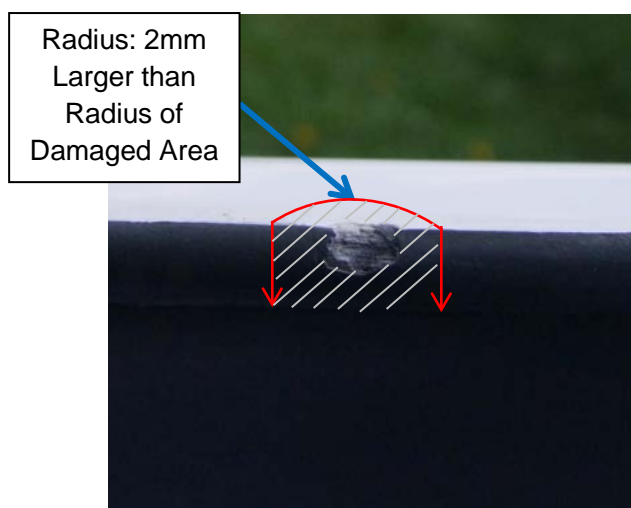
Canopy Frame/Canopy Latch Hinge Bolt Interference

DESCRIPTION

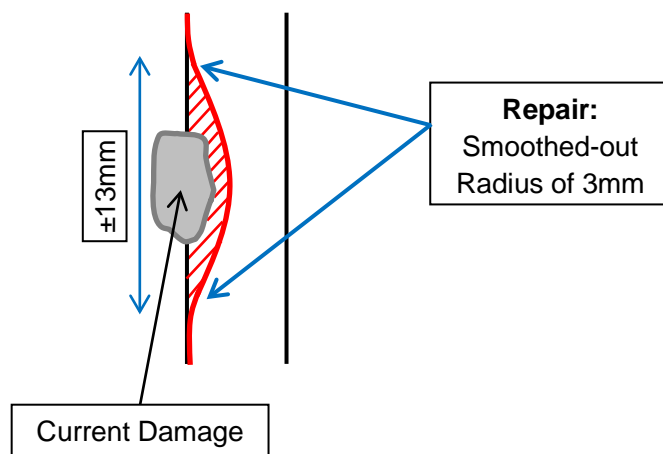
The lack of clearance between Canopy Latch Hinge Bolt (canopy frame side) and cockpit frame may cause witness marks or cosmetic damage to the cockpit frame. This Technical Note sets out a procedure to modify the cockpit frame to prevent possible interference.

INSTRUCTIONS

1. Scallop the sharp edges of the damaged spot to a smooth radius of 3mm. The radius around the damaged area must be 2mm larger than the radius of the damaged area. Grind the entire thickness of the side frame away, as illustrated by the hatched-out area on the picture below.



As seen from the top:



Document Name: Technical Note Canopy Frame/Canopy Latch Hinge Bolt Interference	Document Number: TN.JS-019	Rev: 1.0	Document Issue Date: 17 February 2015	Authorized Signatures		Page 1 of 2
				Chief Design Engineer: <i>[Signature]</i>	Accountable Manager: <i>[Signature]</i>	

MATERIAL SUPPLIED

N/A

MATERIAL REQUIRED

1. File and/or Pneumatic Grinder

MASS AND BALANCE

No change to mass or balance

MANUALS

No change to Flight or Maintenance Manuals

NOTES

This technical note is not safety critical and can be performed by the owner.

Document Name: Technical Note Canopy Frame/Canopy Latch Hinge Bolt Interference	Document Number: TN.JS-019	Rev: 1.0	Document Issue Date: 17 February 2015	Authorized Signatures		Page 2 of 2
				Chief Design Engineer:	Accountable Manager:	
				<i>[Signature]</i> J.S. Jonker	<i>[Signature]</i> J.U. Jonker	