

## Technical Note TN.JS-014

12 April 2013

### TITLE

Caliper Anchor Replacement

### DESCRIPTION

The Caliper Anchor (Part Number 1A-1.05.82) was changed to provide a threaded lug, which eliminates the need for a lock nut. This makes it easier to change the main wheel with less effort and fewer tools. A LG brake lock bolt (1A-1.05.30.10) is used to mount the Caliper Anchor to the LG Arm of the Main Wheel System. A 2mm hole is drilled into the Bottom Hinge Lug for a locking wire to be inserted and fed through the hole in the LG brake lock bolt head.

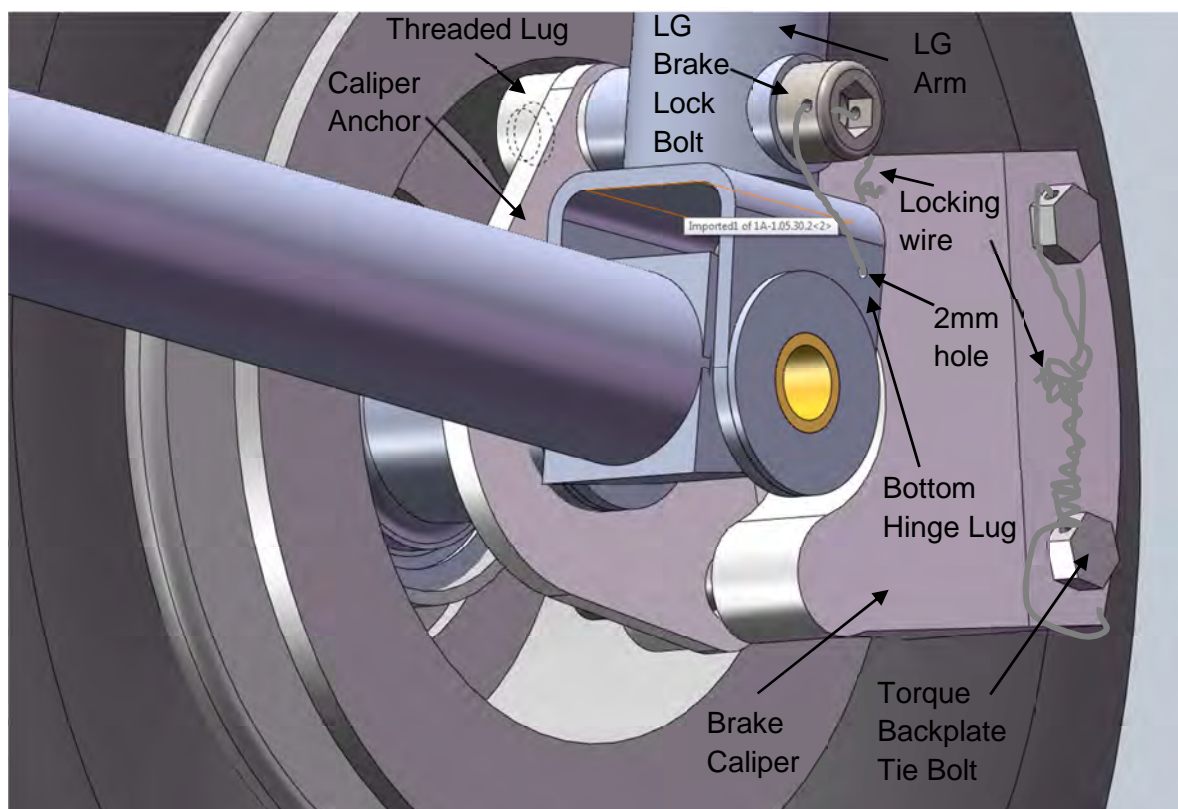


Figure 1: Assembled Caliper Anchor

### INSTRUCTIONS

With reference to Figure 1:

(Disassemble the main gear and brake caliper in accordance with to AC43.13-1B Chapter 9 Section 1)

1. Place the JS Fuselage on a Belly stand.
2. Disassemble the main wheel by removing the caliper and the main shaft.

Document name: Caliper Anchor Replacement	Document number: TN.JS-014	Rev: 1	Document issue date: 12 April 2013	Authorized signatures		Page 1 of 5
				Chief Design Engineer:	Accountable Manager:	
				<i>afster.</i>	<i>[Signature]</i>	

3. Remove the main wheel - see Figure 2.



Figure 2: Main Wheel Removed

4. Drill a 2mm hole in the Bottom Hinge Lug as location is depicted in Figure 3.

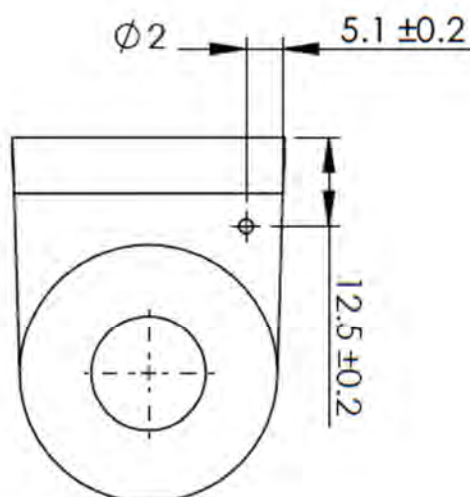


Figure 3: Bottom Hinge Lug 2mm hole location

5. Remove the old Caliper Anchor - see Figure 4.



Figure 4: Remove Caliper Anchor

Document name: Caliper Anchor Replacement	Document number: TN.JS-014	Rev: 1	Document issue date: 12 April 2013	Authorized signatures		Page 2 of 5
				Chief Design Engineer:	Accountable Manager:	
				<i>afster.</i>	<i>Jonker</i>	

6. Ensure a sliding fit between the Caliper Anchor and the brake caliper - see Figure 5.  
(Polish away any corrosion on the brake caliper studs for good slide fit)



Figure 5: Brake Caliper

7. Apply a thin layer of grease to the brake caliper studs. NB: Take care not to get any grease on the brake pads.
8. Install the supplied Caliper Anchor - see Figure 6.



Figure 6: Brake Caliper

9. Reassemble the main wheel and install M12 locknuts on both sides of the main shaft.  
Note: Make sure that the main shaft threads stick out equally on both sides with at least 1 ½ turns safety standard.



Figure 7: Assembled Main Wheel

Document name: Caliper Anchor Replacement	Document number: TN.JS-014	Rev: 1	Document issue date: 12 April 2013	Authorized signatures		Page 3 of 5
				Chief Design Engineer:	Accountable Manager:	
				<i>afster.</i>	<i>[Signature]</i>	

10. Install the LG brake lock bolt - see Figure 8


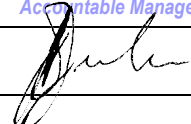


**Figure 8: Assembled Brake caliper**

11. Secure the Torque Backplate Tie Bolts together and LG brake lock bolt to the Bottom Hinge Lug 2mm hole with locking wire in accordance with AC43.13-1B subpart 7-122 to 7-123. See Figure 1.

Note: Torque the Backplate Tie Bolts to 8.5-9 N.m (75-80 in-lbs).

12. Fill 2mm hole in the Bottom Hinge Lug with grease for corrosion protection

Document name: Caliper Anchor Replacement	Document number: TN.JS-014	Rev: 1	Document issue date: 12 April 2013	Authorized signatures		Page 4 of 5
				Chief Design Engineer:	Accountable Manager:	
						

## MATERIAL SUPPLIED

- Pre-assembled Caliper Anchor (Part Number 1A-1.05.82 #V2)
- LG brake lock bolt (Part no. 1A-1.05.30.10)
- 2x M12 nyloc 9mm (Part no.1A-1.05.74.10)

## MATERIAL REQUIRED

- Locking wire (Ø 0.032")

## TOOLS REQUIRED

- 2mm metal drill bit
- Lubrication grease as indicated in the Maintenance Manual (1A-5.04.20)

## MASS AND BALANCE

No change to mass or balance

## MANUALS

No change to Flight or Maintenance Manuals

## NOTES

This Service Bulletin must be performed by an appropriately authorised person.

Document name: Caliper Anchor Replacement	Document number: TN.JS-014	Rev: 1	Document issue date: 12 April 2013	Authorized signatures		Page 5 of 5
				Chief Design Engineer:	Accountable Manager:	
				