



Service Bulletin SB.JS-014

5 July 2012

TITLE

Clevis Pins and Split Pins in Canopy Release Mechanism

APPLICABILITY

MODEL	SERIAL NUMBERS
JS1A	001 – 003, 005, 009
JS1B	004, 006 – 008, 010 – 037

REASON

Incorrect installation of the clevis pin in the canopy release mechanism may prevent the mechanism from operating correctly.

DESCRIPTION

Cases have been reported where the Clevis pins were installed incorrectly in the canopy release system. It is critical that all JS1 canopy release handles be inspected to ensure proper installation, and that incorrect installations be corrected.

COMPLIANCE

MANDATORY. This service must be accomplished by the pilot or approved personnel before the next flight.

INSTRUCTIONS

The canopy latches should be inspected to determine whether the Clevis pins are installed, and secured with split pins.

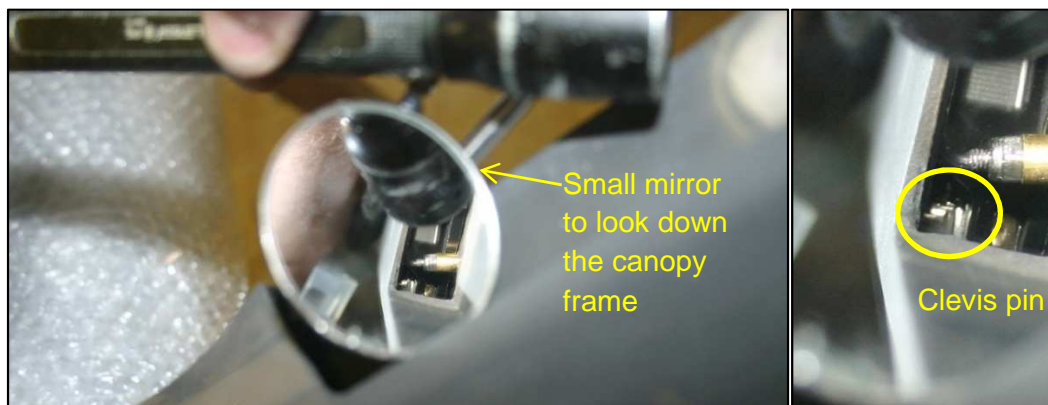
1. Remove the canopy from the glider, and place on two stands to allow access from below. Leave the release and jettison handles fully opened.
2. Using a torch light, inspect the canopy jettison rod at the front to see the Clevis pin and split pin.



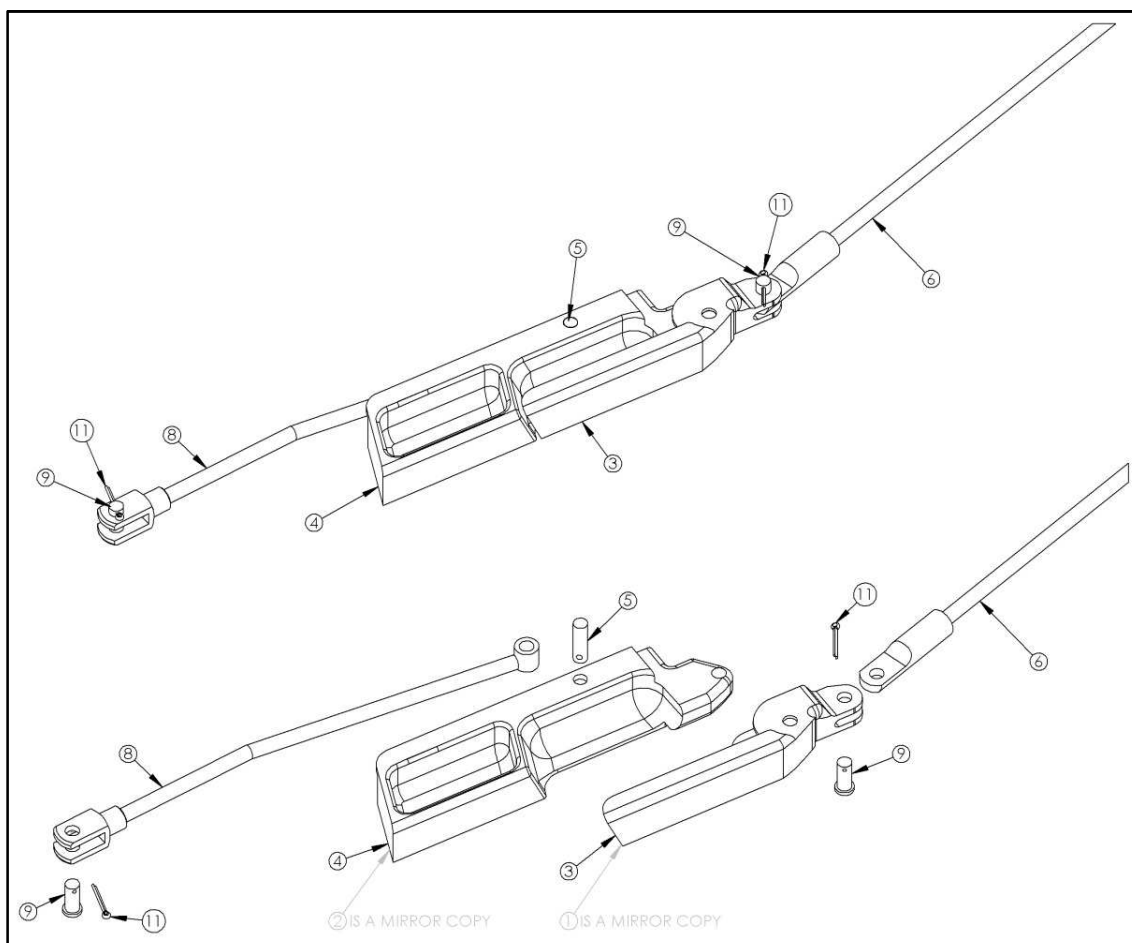


Approval number: Design: D667, Manufacturing: M667, Maintenance: AMO1179

- The canopy release rod can be inspected using a torch light and a small mirror. Holding the mirror inside the canopy from below, position the mirror to see nearly straight into the canopy frame. Position the torch to light up the frame and the release rod.



Both Clevis pins (Item 9) must be installed from below and each must be secured by a split pin (Item 11).



If either split pin is missing, or appears to be slipping out, replace it immediately.



To replace the forward split pin:

4. Close the canopy jettison handle (Item 4) until the jettison locking rod (Item 8) is at its furthest forward. The rod will retract slightly when the handle is closed fully. Support the Clevis pin from below by blocking the hole at the bottom of the canopy frame, to prevent it from lowering or falling out.



5. Use needle-nose pliers to rotate the Clevis pin in order to insert a split pin. The split pin hole can be accessed from the front of the canopy frame.
6. Use needle-nose pliers to insert the split pin into the hole of the Clevis pin. Then rotate the Clevis pin to face the prongs of the split pin.
7. Using the pliers, pull on the split pin by its longer prong until it stops, then open the prong to prevent the split pin from falling out. Bend the short prong around the Clevis pin, and then do the same with the long prong.

To install the rear split pin:

8. Open the canopy jettison handle fully. Remove the bolt from above and below the canopy frame, taking care not to damage the canopy frame finish.



Approval number: Design: D667, Manufacturing: M667, Maintenance: AMO1179



9. Pull the handles forward, allowing them to rotate around the pin (Item 5), until the Clevis pin can be accessed.
10. Install the split pin as per Steps 5 to 7.
11. Installation of the handles is the reverse of Steps 8 and 9, taking care not to damage the canopy frame finish.

MATERIAL SUPPLIED

- Clevis pins – 4 per glider (part nr. 1A-1.11.36.4)

MATERIAL REQUIRED

- 1.6 x 16 mm split pins – 4 per glider

TOOLS REQUIRED

- Needle-nose pliers
- Inspection mirror

MASS AND BALANCE

This service has no effect on the mass and balance of the aircraft, as it restores conformance to the original design.

MANUALS

This service has no effect on the Flight Manual and Maintenance Manual.

NOTES